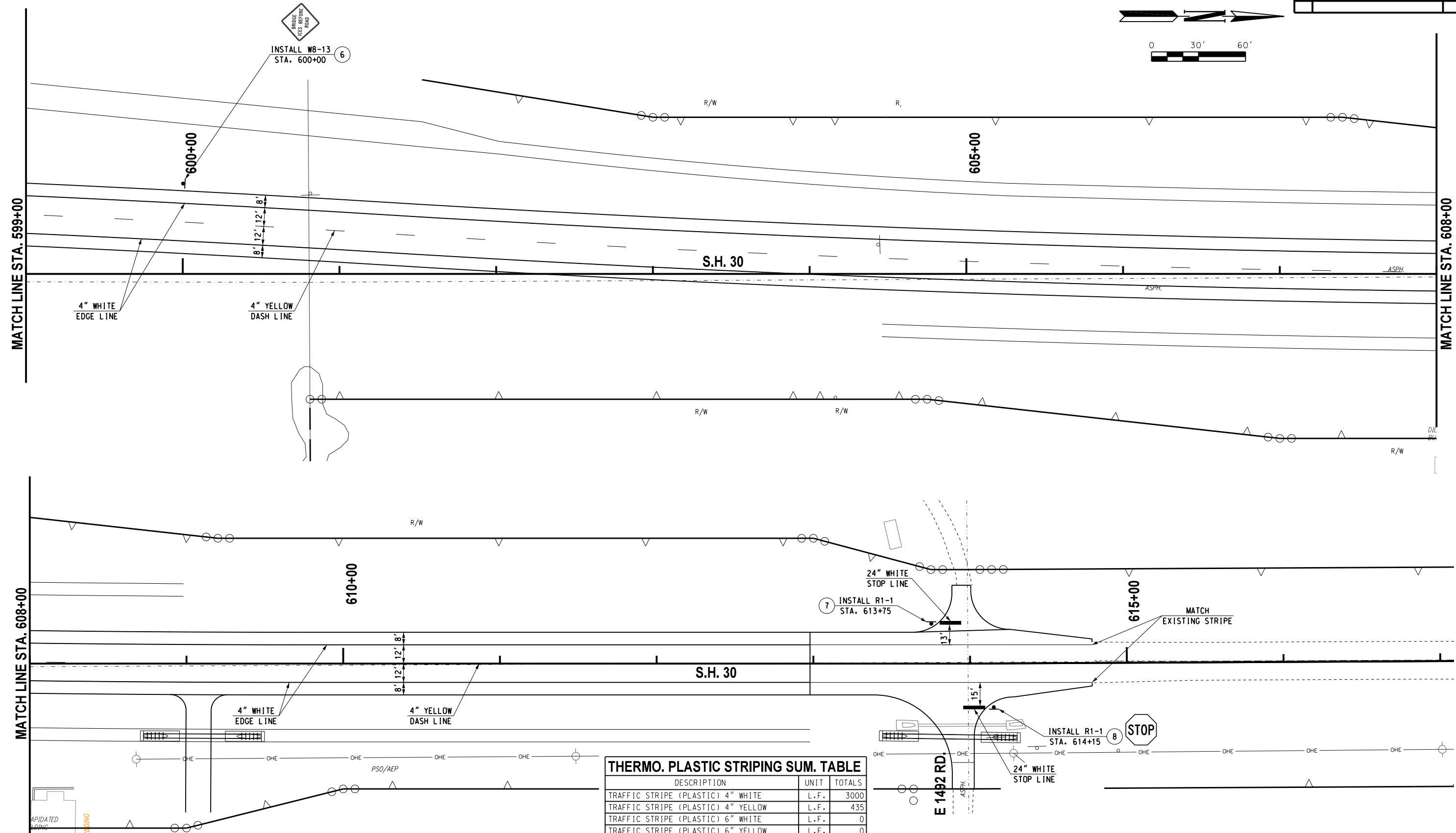
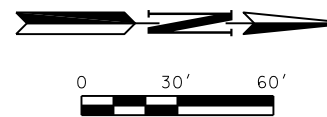


REVISIONS		
NO.	DESCRIPTION	DATE



THERMO. PLASTIC STRIPING SUM. TABLE

DESCRIPTION	UNIT	TOTALS
TRAFFIC STRIPE (PLASTIC) 4" WHITE	L.F.	3000
TRAFFIC STRIPE (PLASTIC) 4" YELLOW	L.F.	435
TRAFFIC STRIPE (PLASTIC) 6" WHITE	L.F.	0
TRAFFIC STRIPE (PLASTIC) 6" YELLOW	L.F.	0
TRAFFIC STRIPE (PLASTIC) 6" BLACK	L.F.	0
TRAFFIC STRIPE (PLASTIC) 8" WHITE	L.F.	0
TRAFFIC STRIPE (PLASTIC) 8" YELLOW	L.F.	0
TRAFFIC STRIPE (PLASTIC) 12" WHITE	L.F.	0
TRAFFIC STRIPE (PLASTIC) 12" YELLOW	L.F.	0
TRAFFIC STRIPE (PLASTIC) 24" WHITE	L.F.	28
TRAFFIC STRIPE (PLASTIC) ARROWS	EA.	0
TRAFFIC STRIPE (PLASTIC) WORDS	EA.	0
TRAFFIC STRIPE (PLASTIC) SYMBOLS	EA.	0

FOR DIMENSIONS NOT SHOWN ON THE PLANS FOR PAVEMENT MARKING, REFERENCE SHALL BE MADE TO THE STANDARD O.D.O.T. DRAWINGS (LATEST REV.).

Design	RWR	9/13/2016
Drawn	SB	9/13/2016



SIGNING & STRIPING PLAN
STA. 599+00 TO STA. 617+00

State Job No. 28768(04) Sheet No. 62

9/13/2016 G:\0\Projects\17-2356 SH 30 over Sat Fork of Red River\CADD\STRIPING 3.dgn

S.H. 30 BRIDGE & APPROACHES HARMON COUNTY